

Agroforestry in Belgium: state of the art 2016

Bert Reubens & Olivier Baudry

Montpellier, May 2016

ILVO
Institute for Agricultural
and Fisheries Research

AGROFORESTRY
VLAANDEREN



Agroforestry associations & projects

- Wervel vzw (agroforestry & agro-ecology)
- AWAF (Association pour l'Agroforesterie en Wallonie et à Bruxelles)
- Agroforesterie.be (consultancy office and realising entreprise)
- CDAF (Centre de Développement AgroForestier de Chimay)
- Project "Agroforestry in Flanders" (research & guidance)



- Research project "agriculture is life" including PhD on AF



CAP and other policies affecting AF

- Flanders
 - Implementing submeasure 8.2 (previously measure 222)
 - Since 2011, 80% of total plantation costs refunded. No subsidy for maintenance costs.
 - Agroforestry eligible as ecological focus area IF established with support under submeasure 8.2
- Wallonia
 - Submeasure 8.2 NOT implemented
 - Agroforestry NOT eligible as ecological focus area
 - New subsidies (Departement of Nature and Forests) for supporting agroforestry systems (plantation and maintenance – up to 80% of costs) : trees, hedges, linear-short-coppice systems (including high-productive species)
- Both in Flanders & Wallonia
 - Modification of legal texts (Forest Decree, land planning rules (Code de Développement Territorial / veldwetboek)) including definition and modalities for agroforestry systems : suppression of tree-felling permits in the case of AF parcel
 - Discussion with land owners & farmer's lobby concerning the revision of the farm lease (bail à ferme / pachtwet) to consider new developments of agroforestry.

Presence in Flanders

- New projects since the subsidy in 2011
 - About 95 ha – progress in yearly increase
 - 42 parcels - 26 farms
 - Mean area: 2 ha (0,5 – 11,5)
 - Mean density: 56 trees/ha (30-200)
 - 3 tree species on average (1 – 11)
 - Most popular: Walnut, Poplar, Oak, Cherry, fruit trees, but also: Chestnut, Hazelnut, Lime
 - About 35% of the total AF area = organic farming
- Of course also agroforestry without subsidy

Presence in Wallonia

- No precise inventories of agroforestry parcels but
- About 150 ha with about 60 ha of concrete projets (for 2016-2017)
- Mean area: 8-10 ha
- Mean density: 40 trees/ha
- 3 tree species on average
- Most popular: Walnut, Checker, Maple, Oak, Cherry, Birch, Lime, Poplar, Chestnut ...
- About 50% of the total AF area = organic farming

Some examples



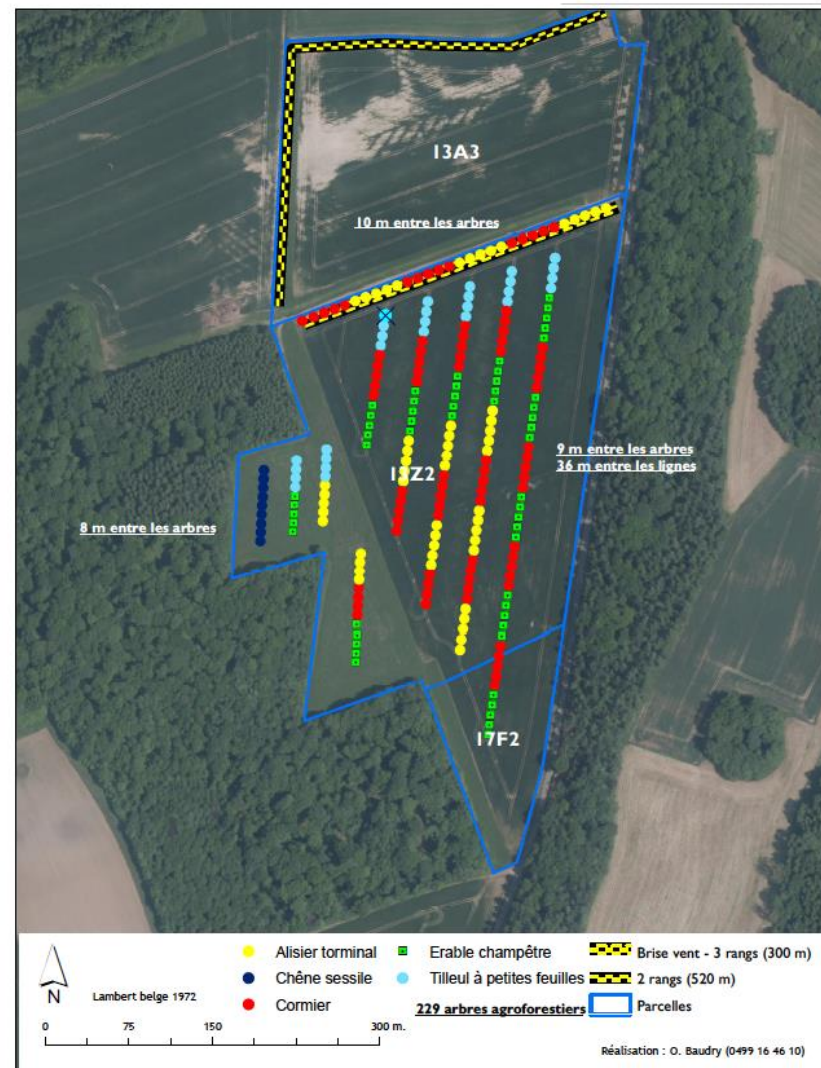
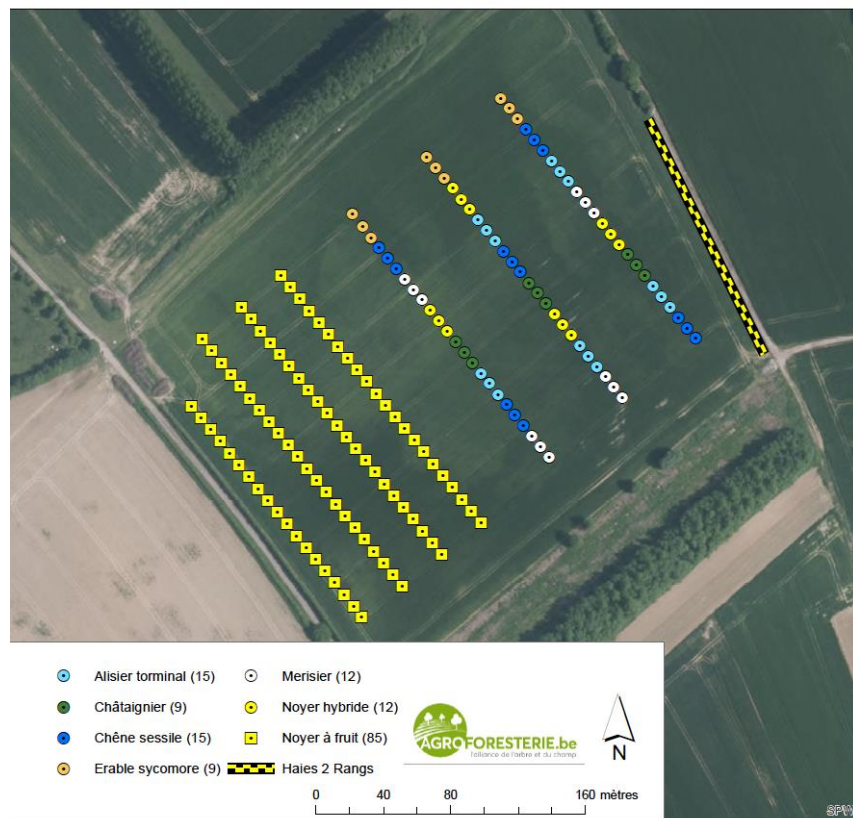
Some examples



Some examples

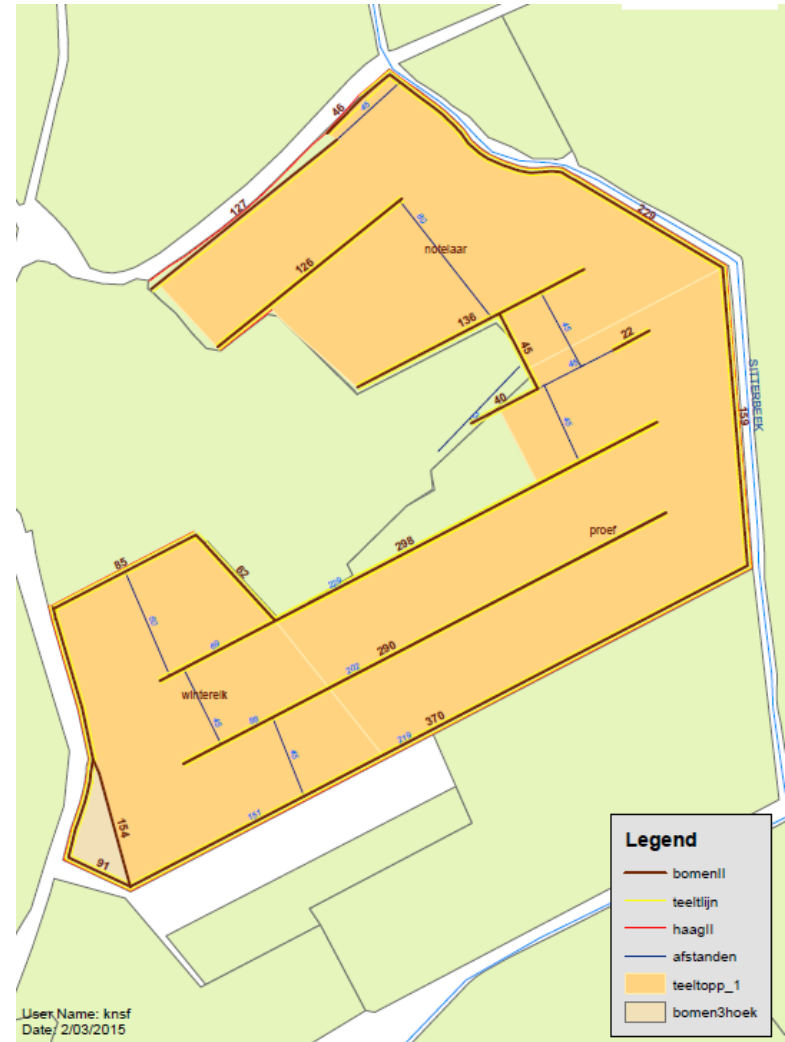
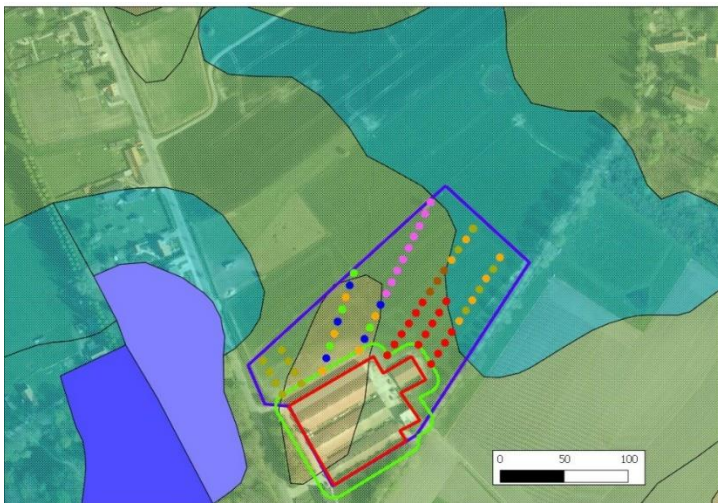


Agroforesterie.be



Project “Agroforestry in Flanders”

Farmer guidance – co-development



Thank you



bert.reubens@ilvo.vlaanderen.be
awafinfo@gmail.com

www.agroforestryvlaanderen.be
www.ilvo.vlaanderen.be
www.awaf.be
www.agroforesterie.be

AGROFORESTRY
VLAANDEREN

ILVO
Institute for Agricultural
and Fisheries Research