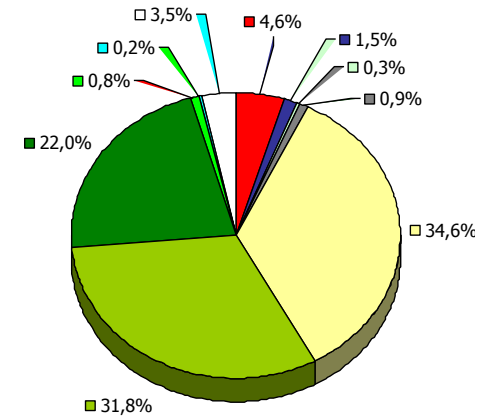
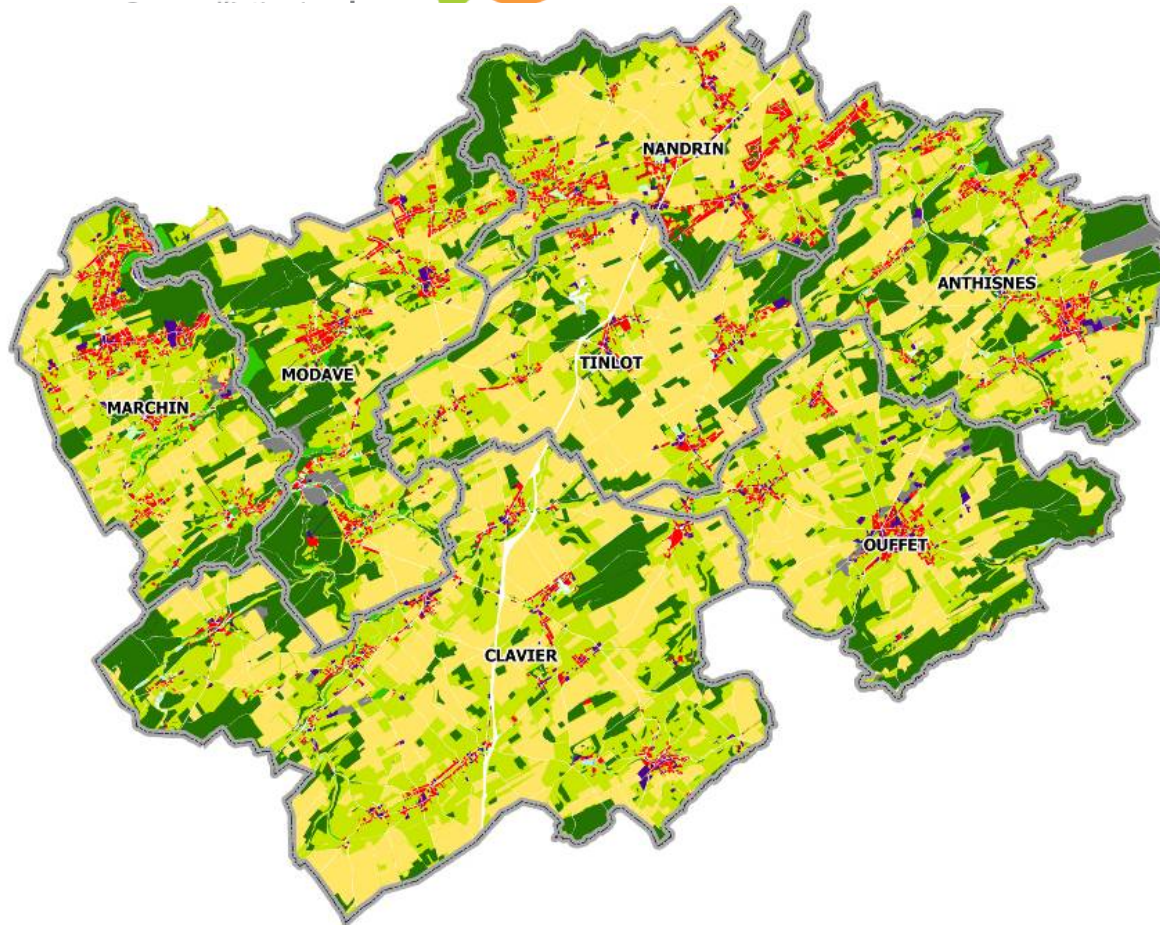




LAG Land of the Condruces
Scotland – June 2014



- Terrains résidentiels
- Espaces d'activité économique, de service, d'équipement et de commun
- Mines, décharges et espaces abandonnés
- Espaces verts artificialisés, non agricoles
- Autres terrains artificialisés
- Terres arables
- Cultures permanentes
- Surfaces enherbées
- Friches agricoles
- Forêts
- Mieux à végétation arbustive et/ou herbacée
- Zones humides intérieures
- Eaux continentales
- Non classé

301, 4 km²

± 30 000 inhabitants

Proximity of Liège

Main priorities

BIOGAS



Biogas :

- territory's potentiel (survey)
- Information /awarness/ facilitation
- Project's coaching
- Innovation : dry biogas

Results :

- 4 feasibility studies / 4 business plans
- 2 building authorizations introduced
- 1 project (stand by)
- 1 project (non profitable)

Main priorities

Short supply chain of local food



Framer's cooperative : +/- 15 growers
Box of vegetables (400/week) and others products
(cheese, meat – 200/week)

E-commerce website : www.pointferme.be



Main Priorities

Access to land and coaching of new market gardeners



We offer :

A field to test the activity (organic market gardening)

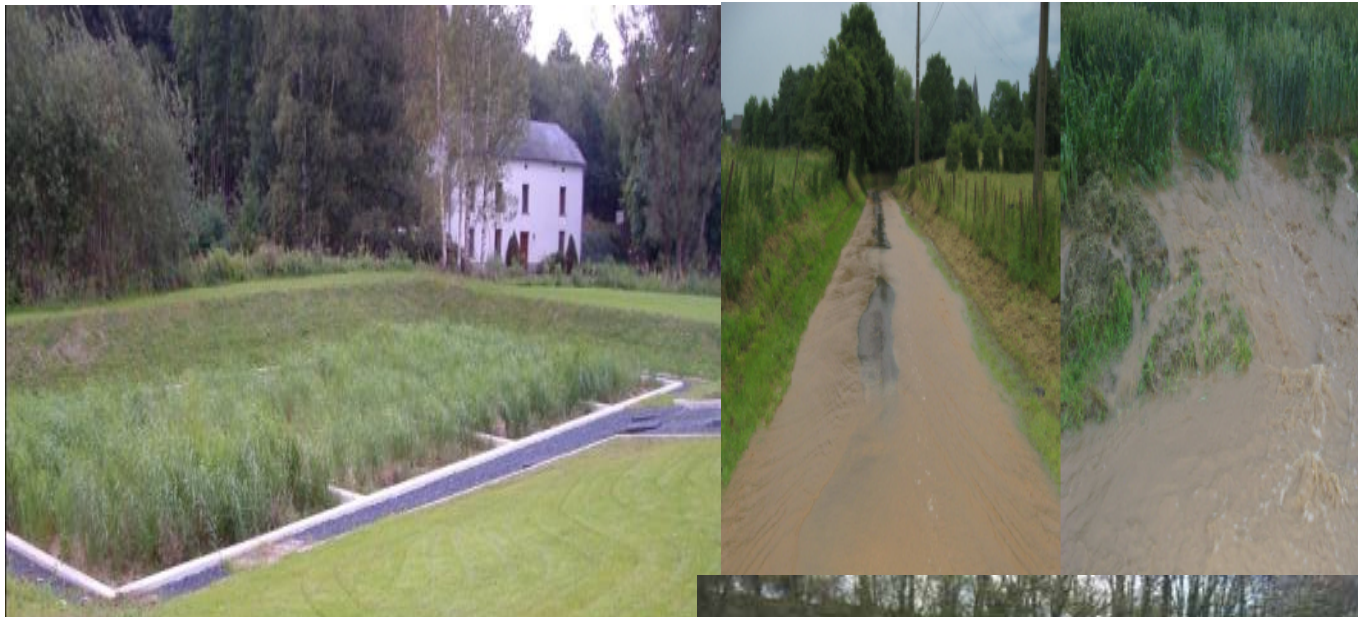
Different tools shared by the new growers (access to rain water, a tiller, greenhouse, etc.)

Coaching : business plan, marketing, technical advices

Main priorities

Water management

Wastewater treatment (by plants)



Struggle and
solution finding
against erosion



Protection of
the riverbanks

Main priorities

Mobility : a call on demand social taxi



Vous devez... vous rendre chez le médecin ? Passer un entretien d'embauche ? Aller faire des courses ? Rejoindre des amis ?

Une solution existe !

085/27.46.10

TaxiCondruces

Anthisnes-Clavier-Marchin-Modave-Nandrin-Ouffet-Tinlot

The graphic features a green background with a stylized green and yellow taxi car on a green hill. A white line representing a call path leads from the taxi to the text on the left. The logo of Pays des Condruces is visible on the right side of the graphic.

- 1 call center
- 2 cars – 3 drivers
- 0,35 €/km for the users

Main priorities

Differentiated management of public spaces : green spaces, squares, streets,.....

Struggle against weeds with :

New Tools : thermal weeder with flames or with **hot water**



Cost : 52 000 €

Sharing between the different municipalities

Positive impact on groundwater

New method : Spacing out cutting, making lawns into flowering meadows

Positive impact on biodiversity

