



FWA

- Agriculture as our first purpose , raison d'être
- one century and a real tradition of union defense
- young structure :10 years since 2011

# MAISON DE L'AGRICULTURE ET DE LA RURALITE

ASSOCIATED MOVEMENTS

FJA

UAW

SERVICES FWA

CGTA

ACW

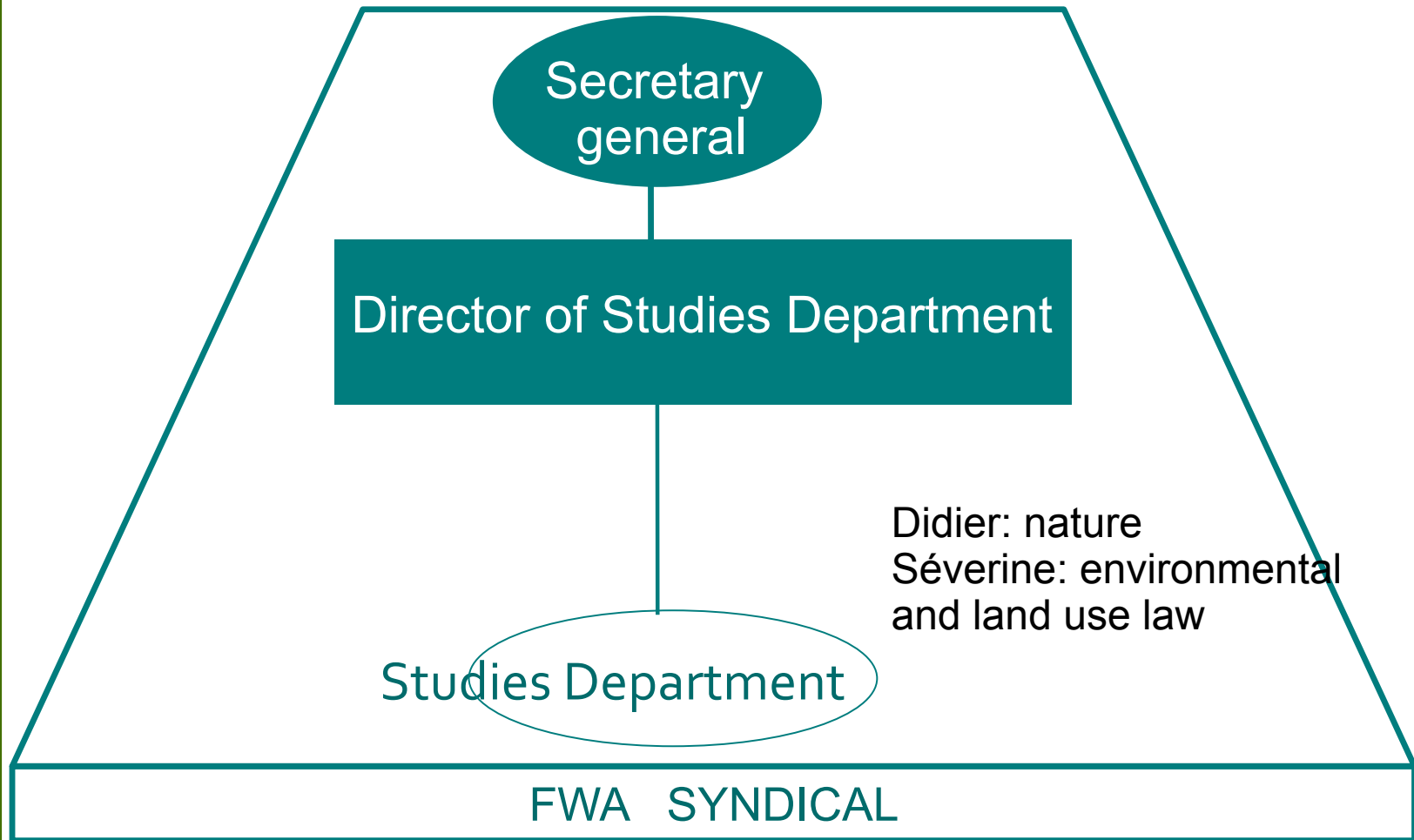
CCFW - FISCALIFWA

Local  
Network

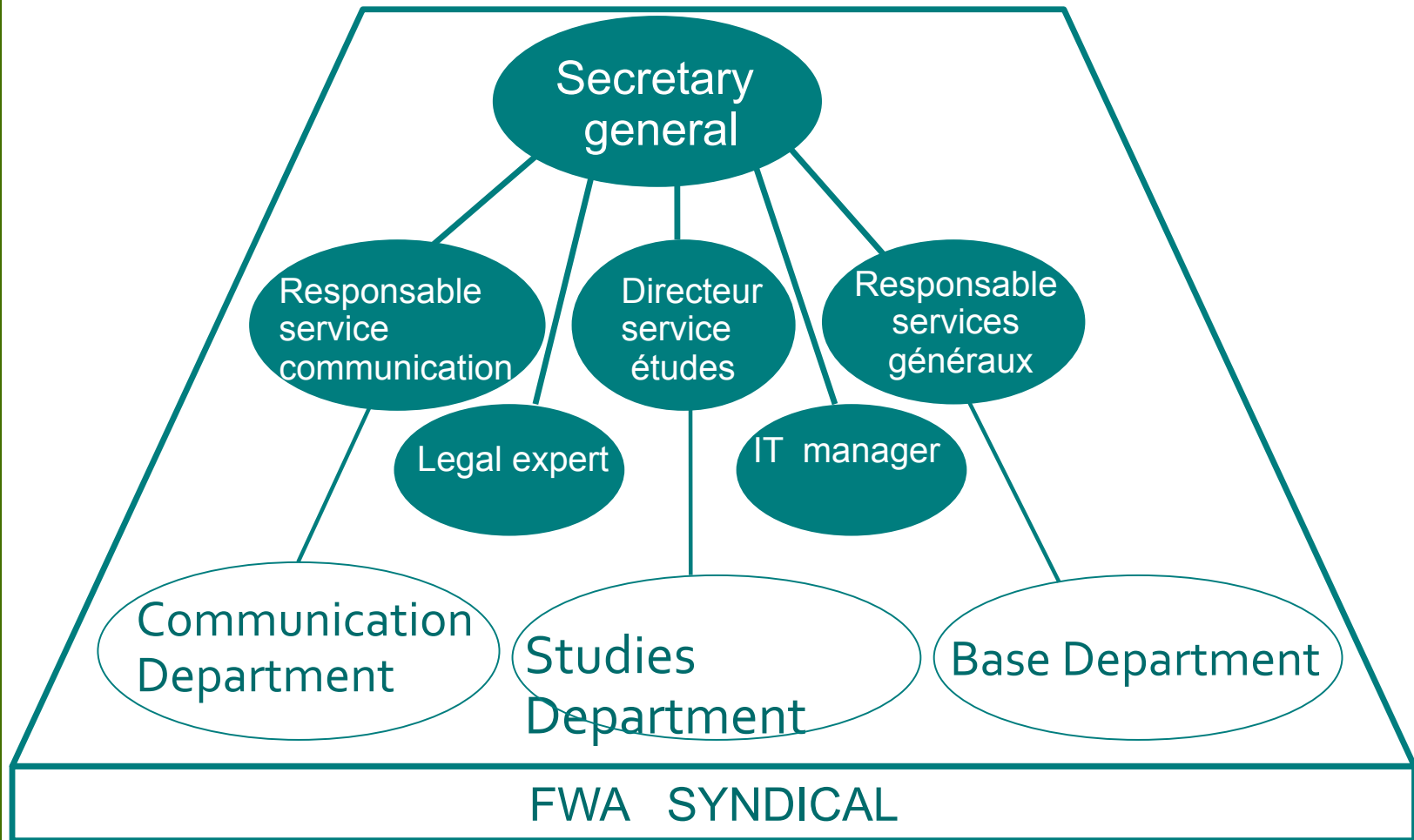
**FWA  
Union  
Defense**

Hosted Structures: FWH - Nitrawal - Naturawal

# MAISON DE L'AGRICULTURE ET DE LA RURALITE



# MAISON DE L'AGRICULTURE ET DE LA RURALITE





FWA

5 JANVIER 2012 N°01  
DÉPOT : BRUXELLES X

# *Pleinchamp*

HEBDOMADAIRE DE LA FÉDÉRATION WALLONNE DE L'AGRICULTURE

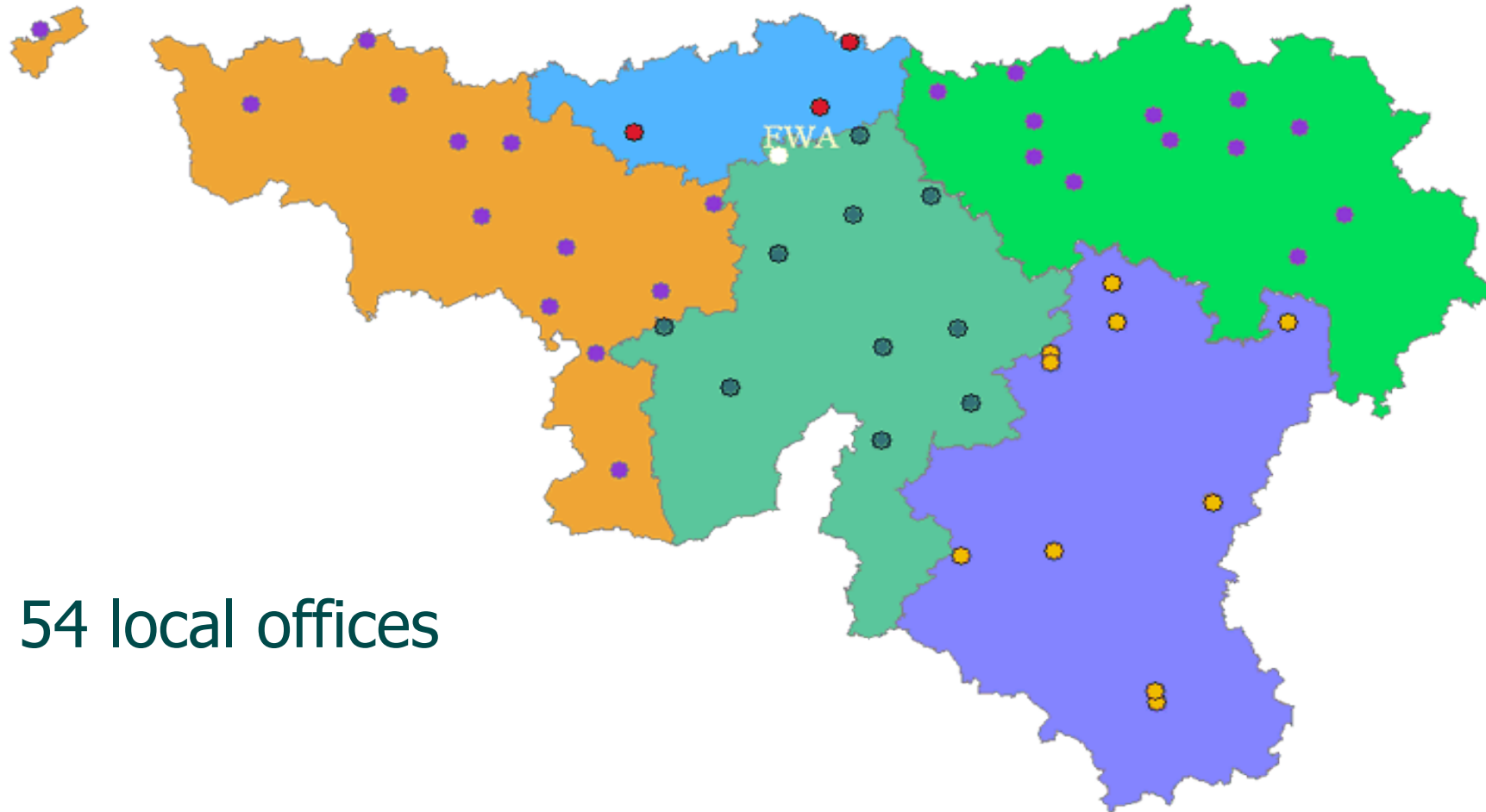
PÉRIODIQUE D'INFORMATION AGRICOLE DIFFUSÉ LE JEUDI AUPRÈS DE TOUS LES EXPLOITANTS AGRICOLES DE WALLONIE  
Chaussée de Namur, 47 B-5030 - Gembloux - Tél. : 081 60 00 60 - Fax : 081 60 04 46 - email : [pleinchamp@fwa.be](mailto:pleinchamp@fwa.be) - [www.fwa.be](http://www.fwa.be)

A weekly newspaper is distributed  
in every farms



# Local network

local services = proximity...



54 local offices

# Les structures de la FWA

## Participatory Democracy

Each members are elected at each level of decision by farmers themselves

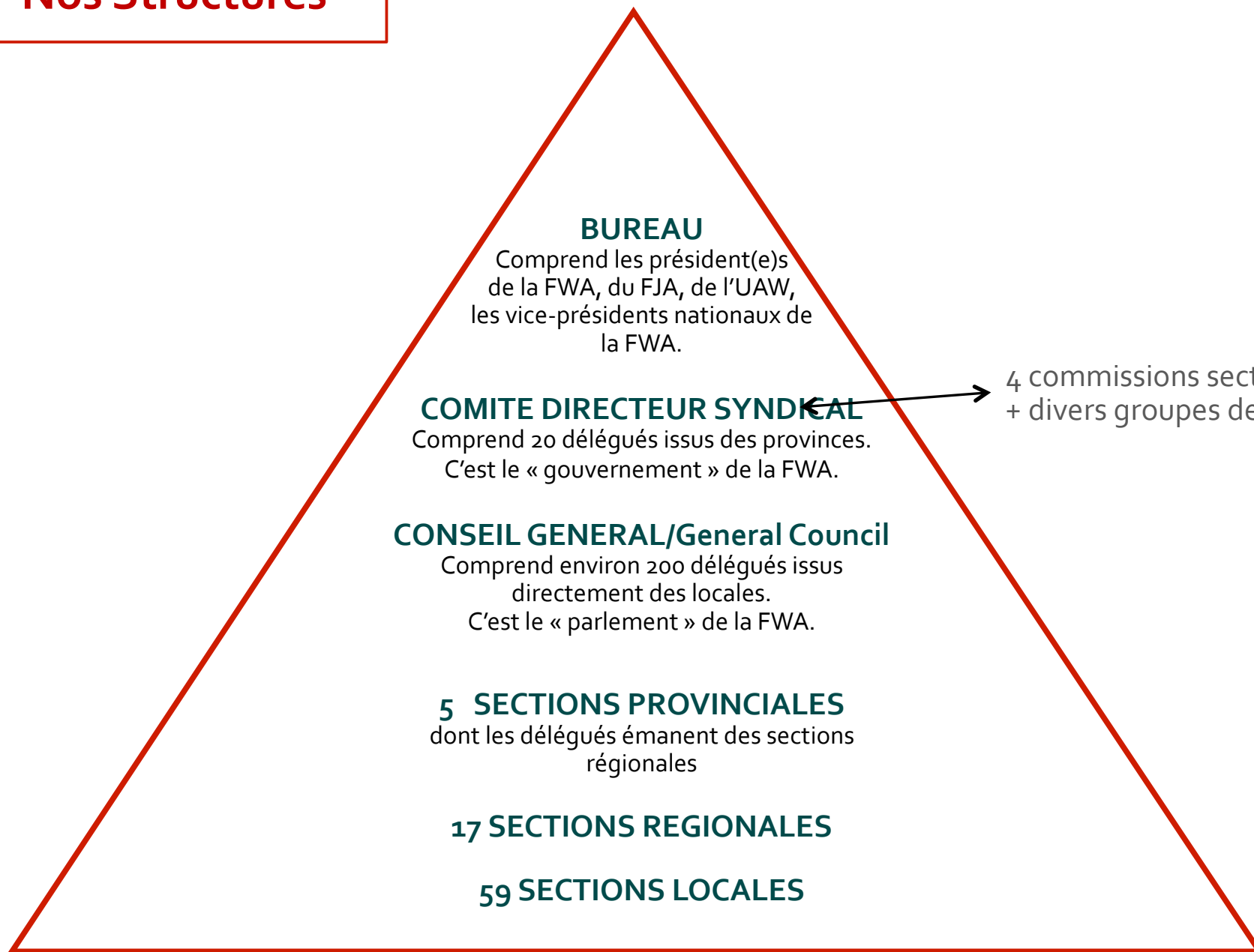
(to be eligible: be member of FWA (membership fee) and be farmer)



**FWA is a real tool of agriculture trade**



# Nos Structures



4 commissions sectorielles + divers groupes de travail





# How does it work?

The **'commissions'** analyse and make proposals

The **'Steering Committee'** vote decisions

The **'Studies Department'** negotiate with the public authorities



**Members decide the guidelines**  
**The departments execute the decisions.**



# FWA funding

